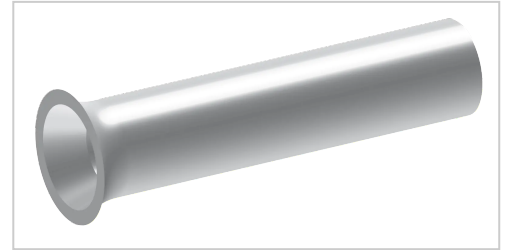


Wire End Sleeve non insulated, 0,75 - 6, 1000 pcs. | 1000

ohne Kunststoffkragen

Product number 07010

Weight 0.041kg



Illustrations are for reference only. Technical specifications may vary and are subject to change without notice.

Product description

- acc. to DIN 46228 part 1
- material: E-Cu
- surface: tin-plated

Product properties

| | |
|------------------------------|----------------------------|
| Surface coating | galvanically tinned copper |
| Nominal size | 0,75 - 6 DIN |
| Version | without insulation |
| d2 | 2,3 mm |
| Material | E-Cu |
| DIN | DIN 46228 Part 1 |
| Nominal cross section | 0,75 mm ² |
| Type of packaging | 1000 |
| l | 6 mm |
| AWG | 18 |
| d1 | 1,2 mm |
| d4 | 1,5 mm |

More images

