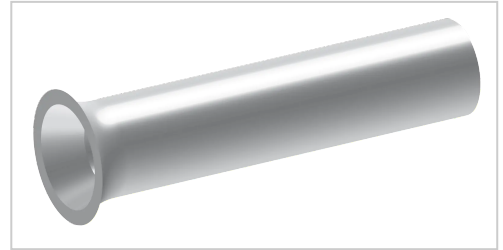


Wire End Sleeve non insulated, 0,75 - 20, 1000 pcs. | 1000

ohne Kunststoffkragen

Product number 07015

Weight 0.153kg



Illustrations are for reference only. Technical specifications may vary and are subject to change without notice.

Product description

- acc. to DIN 46228 part 1
- material: E-Cu
- surface: tin-plated

Product properties

Nominal size	0,75 - 20 DIN
Surface coating	galvanically tinned copper
Version	without insulation
d2	2,3 mm
Material	E-Cu
DIN	DIN 46228 Part 1
Nominal cross section	0,75 mm ²
Type of packaging	1000
AWG	18
d1	1,2 mm
d4	1,5 mm
l	20 mm

More images

